

BRENTANO™

260 Holbrook Drive
Wheeling, IL 60090 USA
T: 847.657.8481
F: 847.657.8641

FOR IMMEDIATE RELEASE

Contact:

Michela Giannini

Brentano, Inc.

T: 847.657.8481

E: pr@brentanofabrics.com

Brentano Showcases Color at the HD Expo New indoor/outdoor fabric Solstice wins IIDA/HD Award

Wheeling, IL. (June 2016) — Brentano showcased color at the Hospitality Design Expo in Las Vegas. With a focus on indoor and outdoor upholstery, the textile design house displayed unique, one of kind color with a vibrant assortment of fabrics from the spring Cornerstone collection and approaching fall Cityscape collection.

New indoor/outdoor pattern Solstice was especially well received. Representing Brentano's collaboration with Sunbrella® Contract, the dynamic Facts-certified textile made appearances in both Sunbrella and Brentano's displays. Solstice also earned the desirable IIDA/HD Product Design Award, Brentano's seventh in nine consecutive years at the show.

"Contributing to the undeniable energy at the HD Expo, we wanted to highlight Brentano's dedication to color with a bold display of indoor/outdoor textiles. I'm grateful the judges shined light on our new pattern Solstice and inspired by the amount of talent that surrounds the show." - Iris Wang, VP of Design, Sales and Marketing.

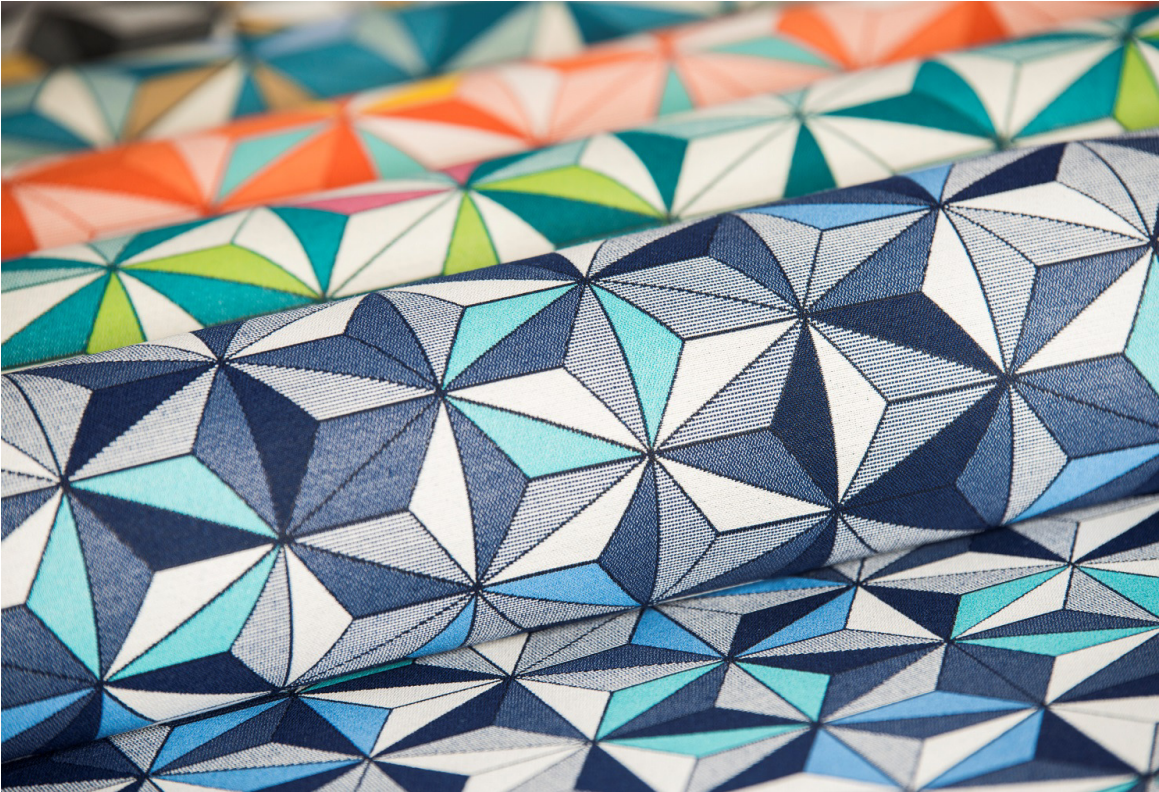
About Brentano:

Led by Design Director Iris Wang, Brentano has grown from a modest eight patterns in 1990 into an international source for polyurethane faux leather, outdoor, Crypton, Nano-Tex and GreenShield-finished, eco-friendly and fire retardant products. The carefully curated line reflects Iris' lifelong study of fine art, nature and Asian philosophy in beautiful, high-performing solutions for the contract, hospitality, healthcare and residential markets. Please visit www.brentanofabrics.com for more information.



BRENTANO™

260 Holbrook Drive
Wheeling, IL 60090 USA
T: 847.657.8481
F: 847.657.8641



Solstice 5815

Inspired by the constellations themselves, **Solstice** is as big and as bold as the celestial bodies that inhabit the night sky. The 54" upholstery's large-scale repeat mimics the rising and setting sun as the vibrant tessellation of triangles dance across the face of the fabric like shooting stars.

###

